

Test Report

Applicant: ANHUI HONYI INTERNATIONAL CORP.
Address: B-2106, BUSINESS BLDG., WOYE GARDEN, GANQUAN RD, SHUSHAN DISTRICT, HEFEI, CHINA

Report on the submitted sample(s) said to be:

Sample Name: PLASTIC KEG&PARTS

Trademark: N/A

Sample Description: Please refer to the following page(s).

Sample model: KL25898

Sample Model No.: KL01564, KL01588, KL04671, KL25904, KL06835, KL06842, KL15189, KL15196, KL15219, KL15226, KL14731, KL11327, KL14748, KL11334, KL28240, KL28257, KL14755, KL22347, KL22354, KL24877, KL10788, KL14076, KL17060, KL14298, KL20312, KL13550, KL15059, KL20848, KL26505, KL27564, KL27571, KL28189, KL28219, KB02113, KB10921, KL20169, KL27144, KL35200, KL29544, KL29551, KL36054, KL38003, KL38102

Sample Received Date: Nov. 16, 2023

Testing Period: Nov. 16, 2023, ~ Nov. 24, 2023

Test Requested: As specified by client, with reference to Commission Regulation (EU) No. 10/2011 and Amendment (EU) 2016/1416 of 24 August 2016 on plastic materials and articles intended to come into contact with food.

For material: Plastics –

Overall migration test (PET)

Specific Migration of Metal (PET)

Specific Migration of Primary Aromatic Amines Test (PET)

Specific migration of phthalate (PET)

Phthalate (PET)

Test Method: Please refer to the following page(s).

Test Result: Please refer to the following page(s).

Checked by

Vivian Liang

Signed for and on behalf of BORY



Usher Kuang
Laboratory Manager

Test Report

No.	Sample Description	Material (Claimed by the client)
01	PLASTIC KEG body	PET

1. Overall migration test (For material: Plastics)

Test Method: With reference to EN 1186-1:2002 for selection of conditions and test methods;
EN 1186-3:2022 evaporable simulants method.

Conclusion: As per Commission Regulation (EU) No. 10/2011 and Amendment (EU) 2016/1416 of 24 August 2016 on plastic materials and articles intended to come into contact with food.

Test Results:

Simulant used	Test condition/ Equipment	MDL (mg/dm ²)	Result (mg/dm ²)	Maximum Permissible Limit (mg/dm ²)
			01	
10% (v/v) ethanol	70°C, 2h ICP-OES	3.0	N.D.	10
3% (w/v) acetic acid		3.0	N.D.	10
20% ethanol		3.0	N.D.	10

Note: 1. mg/dm²= milligram per square decimeter

2. °C = degree Celsius

3. < = less than.

Simulant used	Test condition/ Equipment	MDL (mg/dm ²)	Result (mg/dm ²)	Maximum Permissible Limit (mg/dm ²)
			01	
10% (v/v) ethanol	70°C, 2h ICP-OES	3.0	N.D.	10
3% (w/v) acetic acid		3.0	N.D.	10
20% ethanol		3.0	N.D.	10

Note: 1. mg/dm²= milligram per square decimeter

2. °C = degree Celsius

3. < = less than.

Test Report

2. Specific Migration of Metal (For material: Plastics)

Test Method: With reference to EN13130-1:2004, analysis was performed by ICP-OES

Conclusion: As per commission regulation (EU) NO. 10/ 2011 of 14 January 2011 and Amendment (EU) 2016/1416 of 24 August 2016 on plastic materials and articles intended to come into contact with food.

Test Results:

Test Item	Test condition/ Equipment	MDL (mg/kg)	Result (mg/kg)	Maximum Permissible Limit (mg/kg)
			01	
Barium (Ba)	3% Acetic Acid (W/V) Aqueous Solution, 70°C, 2h ICP-OES	0.25	N.D.	1
Cobalt (Co)		0.01	N.D.	0.05
Copper (Cu)		0.25	N.D.	5
Iron (Fe)		0.25	N.D.	48
Lithium (Li)		0.5	N.D.	0.6
Manganese (Mn)		0.25	N.D.	0.6
Zinc (Zn)		0.5	N.D.	5
Aluminum (Al)		0.1	N.D.	1
Nickel (Ni)		0.01	N.D.	0.02
Conclusion		/	Pass	/

Note: 1. mg/kg = milligram per kilogram of foodstuff in contact with

2. N.D. = Not Detected (< MDL)

3. MDL = Method Detection Limit

Test Report

3. Specific Migration of Primary Aromatic Amines Test (For material: Plastics)

Test Method: Sample preparation with reference to EN 13130-1: 2004 with selection of simulant and condition, followed by analysis by UV.

Conclusion: As per Commission Regulation (EU) No. 10/2011 and Amendment (EU) 2016/1416 of 24 August 2016 on testing the migration of primary aromatic amines from polyamide kitchenware and of formaldehyde from melamine kitchenware

Test Results:

Simulant used	Test condition/ Equipment	MDL (mg/kg)	Result (mg/kg)	Maximum Permissible Limit (mg/kg)
			01	
3% (w/v) acetic acid	70°C, 2h UV	0.01	N.D.	0.01

Note: 1. mg/kg = milligram per kilogram of foodstuff in contact with
2. °C = degree Celsius
3. < = less than.

Test Report

4. Specific migration of phthalate (For material: Plastics)

Test Method: With reference to EN13130-1:2004, analysis was performed by GC-MS

Conclusion: As per commission regulation (EU) NO. 10/ 2011 of 14 January 2011 and Amendment (EU) 2016/1416 of 24 August 2016 on plastic materials and articles intended to come into contact with food.

Test Results:

Simulant Used: 95% Ethanol (V/M) Aqueous Solution

Test Condition: 40°C 2.0hr(s)

Test Item	CAS No.	MDL (mg/kg)	Result (mg/kg)	Maximum Permissible Limit (mg/kg)
			01	
Area/volume		-	2.0	--
Benzylbutyl Phthalate (BBP)	85-68-7	--	N.D.	30
Dibutyl Phthalate (DBP)	84-74-2	0.05	N.D.	0.3
Di (2-ethylhexy) Phthalate (DEHP)	117-81-7	0.05	N.D.	1.5
Disononyl phthalate + Disodecyl phthalate (DINP+DIDP)	68515-48-0 and 26761-40-0	0.2	N.D.	9
Diallyl Phthalate (DAP)	131-17-9	0.01	N.D.	0.01
Conclusion	/	/	Pass	/

Note: 1. mg/kg = milligram per kilogram of foodstuff in contact with

2. N.D. = Not Detected (< MDL)

3. MDL = Method Detection Limit

Test Report

5. Phthalate (For material: Plastics)

Test Method: Solvent extraction, analysis was performed by GC-MS.

Conclusion: As per commission regulation (EU) NO. 10/ 2011 of 14 January 2011 and Amendment (EU) 2016/1416 of 24 August 2016 on plastic materials and articles intended to come into contact with food.

Test Results:

Test Item	CAS No.	MDL (mg/kg)	Result (mg/kg)	Maximum Permissible Limit (mg/kg)
			01	
Dibutyl Phthalate (DBP)	84-74-2	0.03	N.D.	0.05
Benzylbutyl Phthalate (BBP)	85-68-7	0.03	N.D.	0.1
Bis-(2-ethylhexyl) Phthalate (DEHP)	117-81-7	0.03	N.D.	0.1
Diisononyl Phthalate (DINP)	28553-12-0/68515-48-0	0.01	N.D.	0.1
Diisodecyl Phthalate (DIDP)	2676 1-40-0/68515-49-1	0.01	N.D.	0.1
Conclusion	/	/	Pass	/

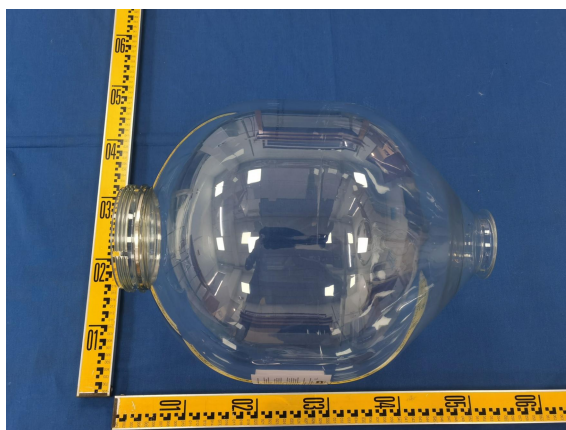
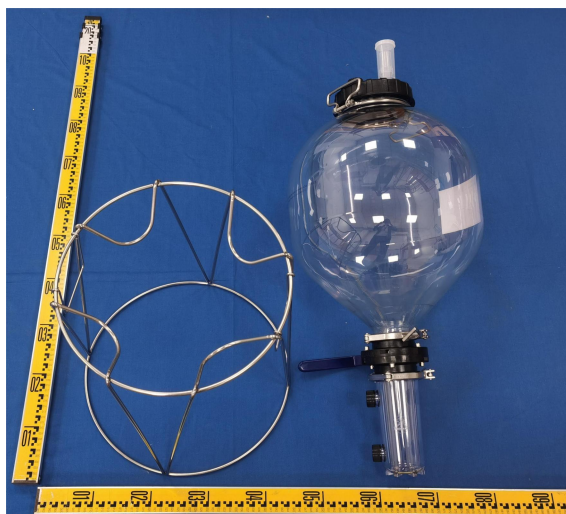
Note: 1. mg/kg = milligram per kilogram of foodstuff in contact with

2. N.D. = Not Detected (< MDL)

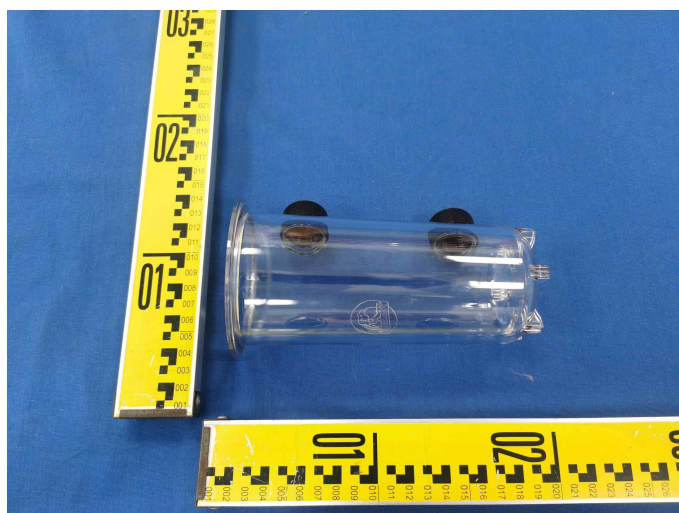
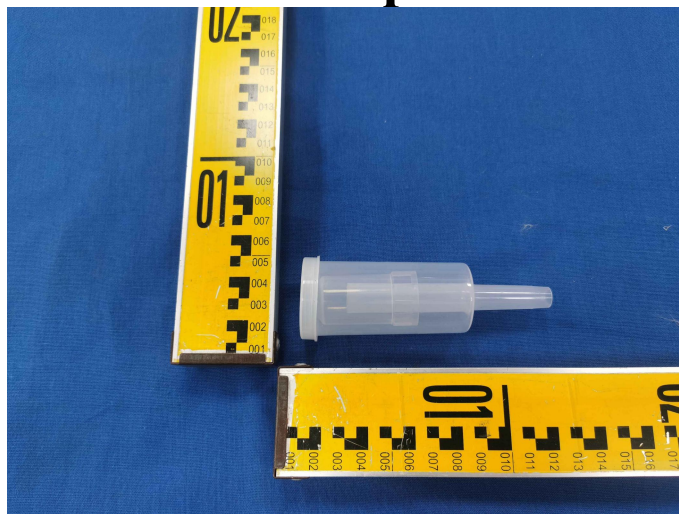
3. MDL = Method Detection Limit

Test Report

The photo of the sample



Test Report



***End ***

This report is considered invalidated without the Special Seal for Inspection of the BORY , This report shall not be altered , increased or deleted. The results shown in this test report refer only to the sample(s) tested. Without written approval of BORY , this report shall not be copied except in full and published as advertisement.